

Date: July 10, 2015

Spectra Precision Reseller Confidential

SP80 Internal UHF Radio Troubleshooting

Summary:

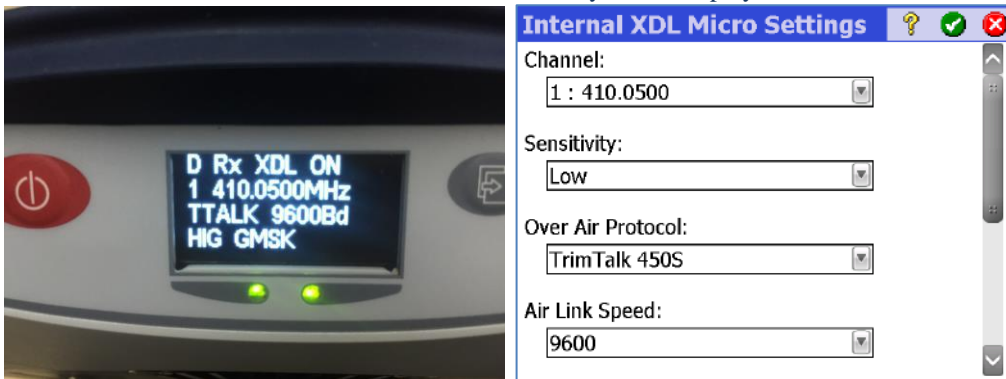
This support note describes how to resolve the problem about SP80 can't detect internal UHF radio.

Issue(s) Addressed:

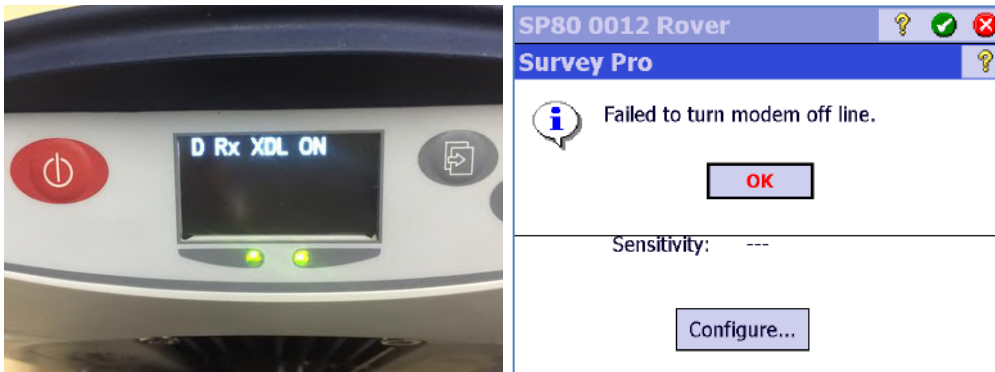
1. How to analysis the reason when SP80 UHF is not available.
2. Resolving the common setting issue with toolkit as ADLCONFIG and Ashcom.

Solution:

When internal UHF radio is assembled and set correctly it will display as below:



But sometimes SP80 can't detect internal UHF radio as below:





This document is for informational purposes only and is not a legally binding agreement or offer. Trimble makes no warranties and assumes no obligations or liabilities hereunder.

Trimble Navigation Ltd, Spectra Precision – GeoInstruments Division - 10368 Westmoor Drive, Westminster, CO 80021, USA

© 2015, Trimble Navigation Limited. All rights reserved. The Spectra Precision logo is a trademark of Trimble Navigation Limited, registered in the United States and in other countries. All other trademarks are the property of their respective owners.



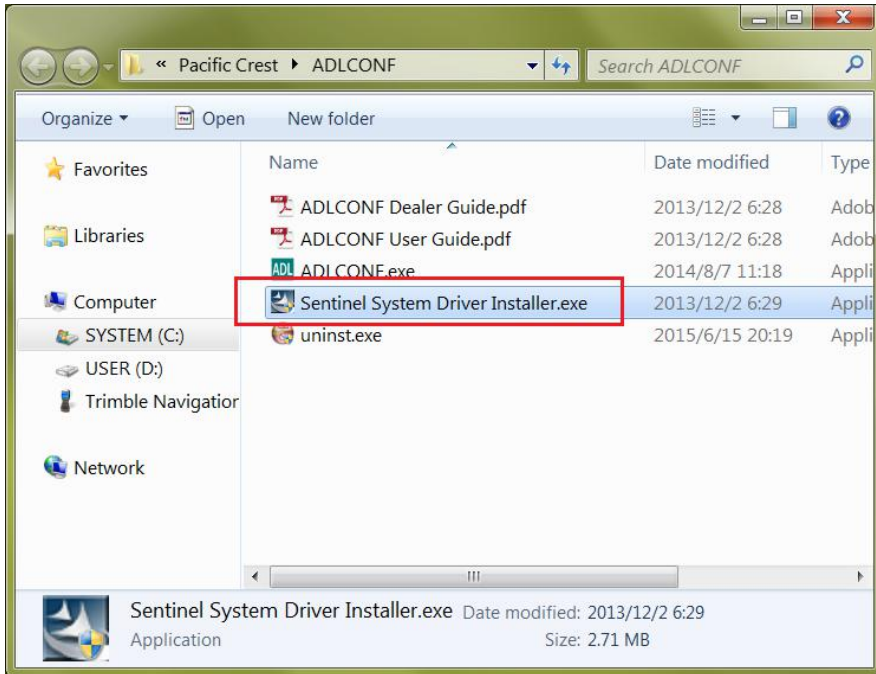
So following are the steps of troubleshooting:

1. Run ADLCONFIG to set the baud rate of serial port to be 38400.
 - a. Power on the SP80 by pressing simultaneously these 2 buttons  +  then switch to Service Mode.

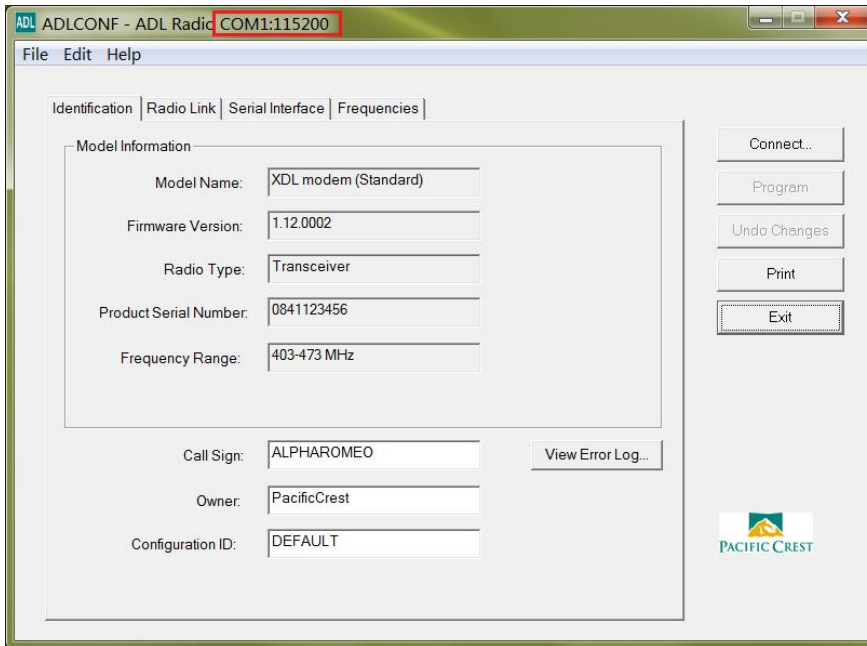


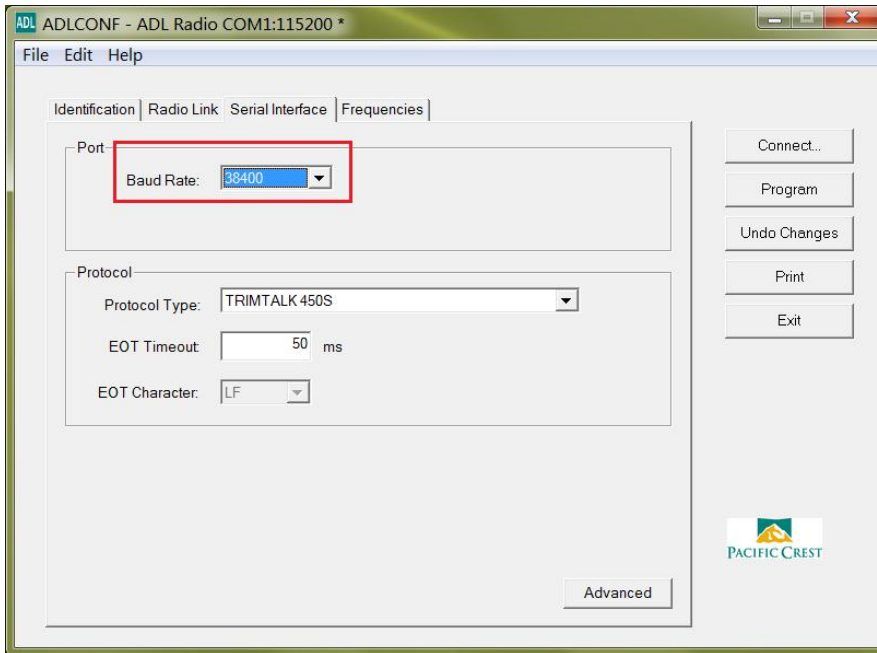
- b. Connecting PC via port A of SP80 with m cable, if receiver can't be recognized that can install the driver which is located in the install folder of ADLCONFIG.



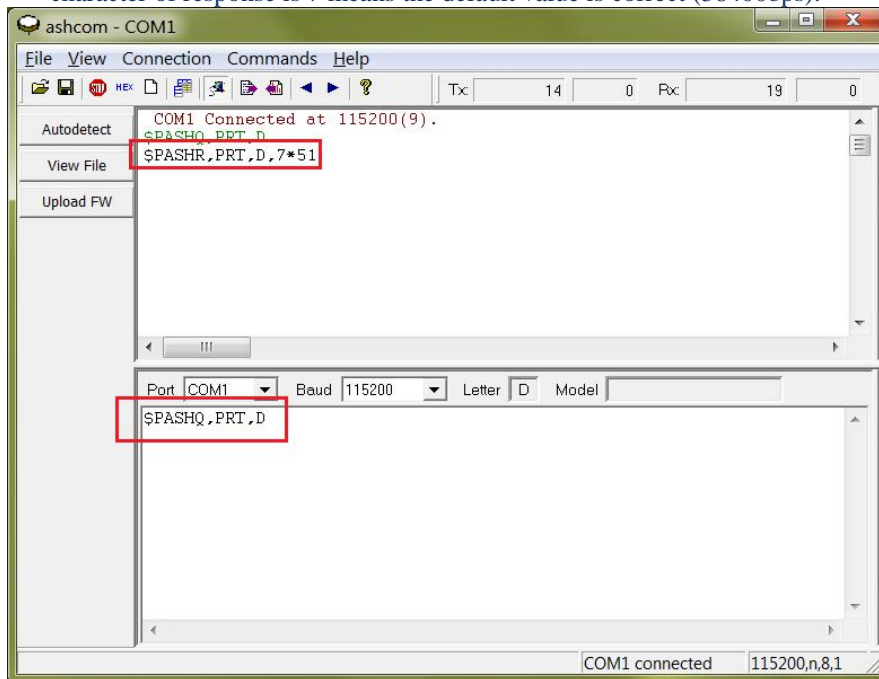


- c. After succeed to connect the UHF radio, it need to check the baud rate which is displayed at the title of dialog. If it's not 38400 that need to change it to 38400 at the tab page of Serial Interface.

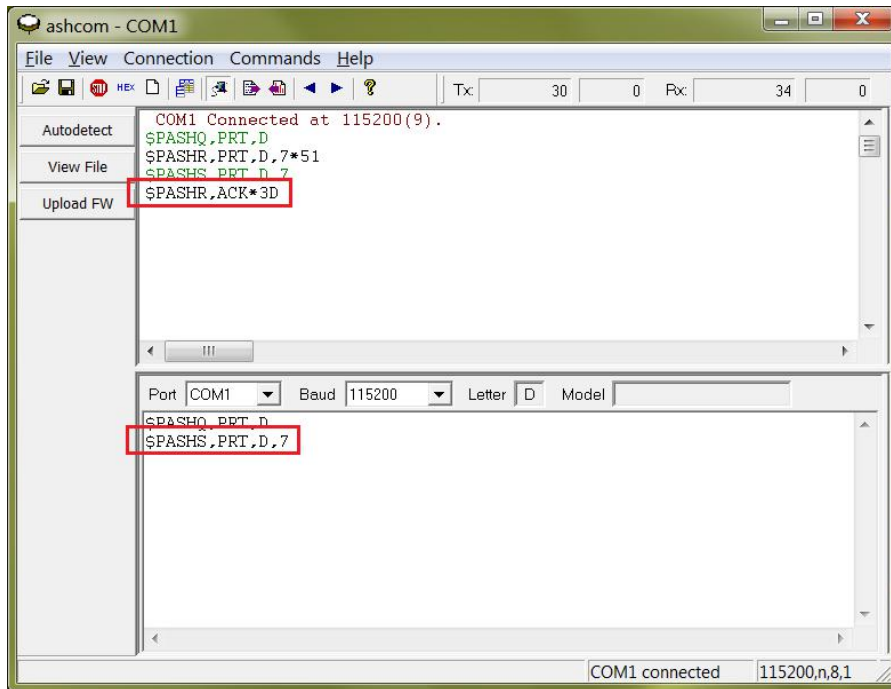




2. After changing the baud rate of radio port to 38400 if receiver still can't detect the UHF radio that need to check the baud rate of receiver internal Port D again by Ashcom.
 - a. At first, sending command \$PASHQ, PRT, D to query the current baud rate of Port D, if the message character of response is 7 means the default value is correct (38400bps).



- b. If not then sending command \$PASHS, PRT, D, 7 to set the baud rate of Port D to 38400.



3. Once above all operation have already been done but still can't resolve the issue, then go on checking SP80 front screen to see if the radio page existing or not. If not quite possible point is due to hardware like joint loose between ribbon cable and internal port D of receiver.